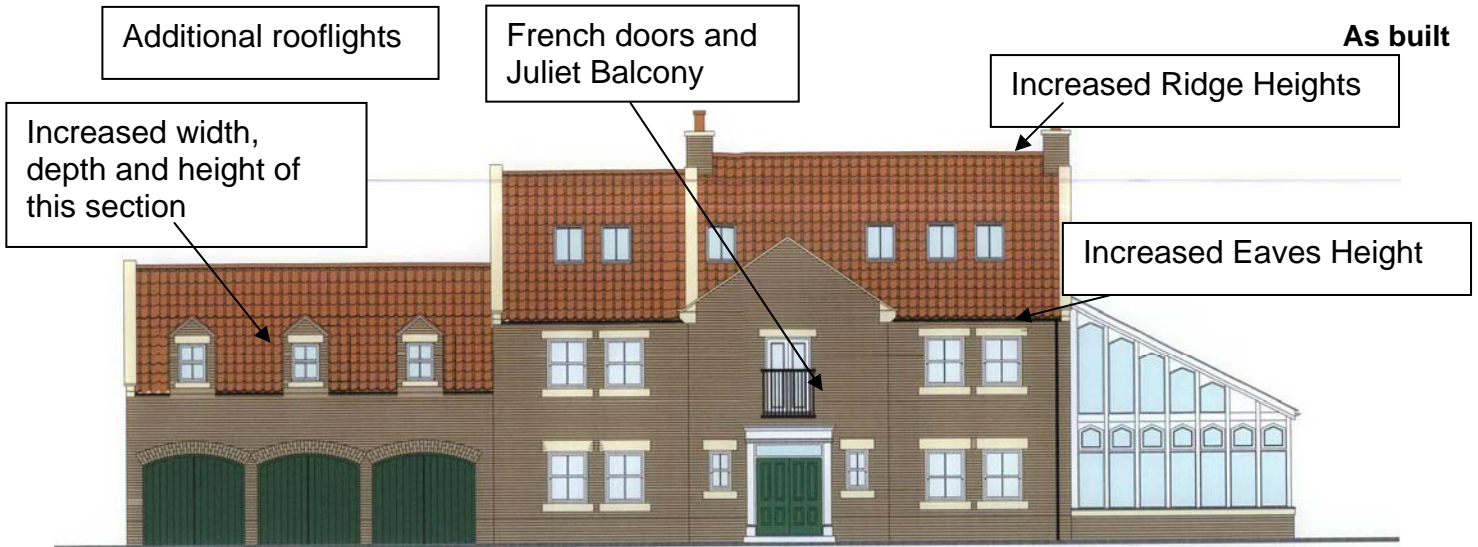


**Appendix reference 2. DWELLING ONE -(North or rear elevation)
DIFFERENCES BETWEEN AS BUILT, AS PROPOSED AND AS APPROVED PLANS**



Dwelling One - Proposed North Elevation (scale 1:100)

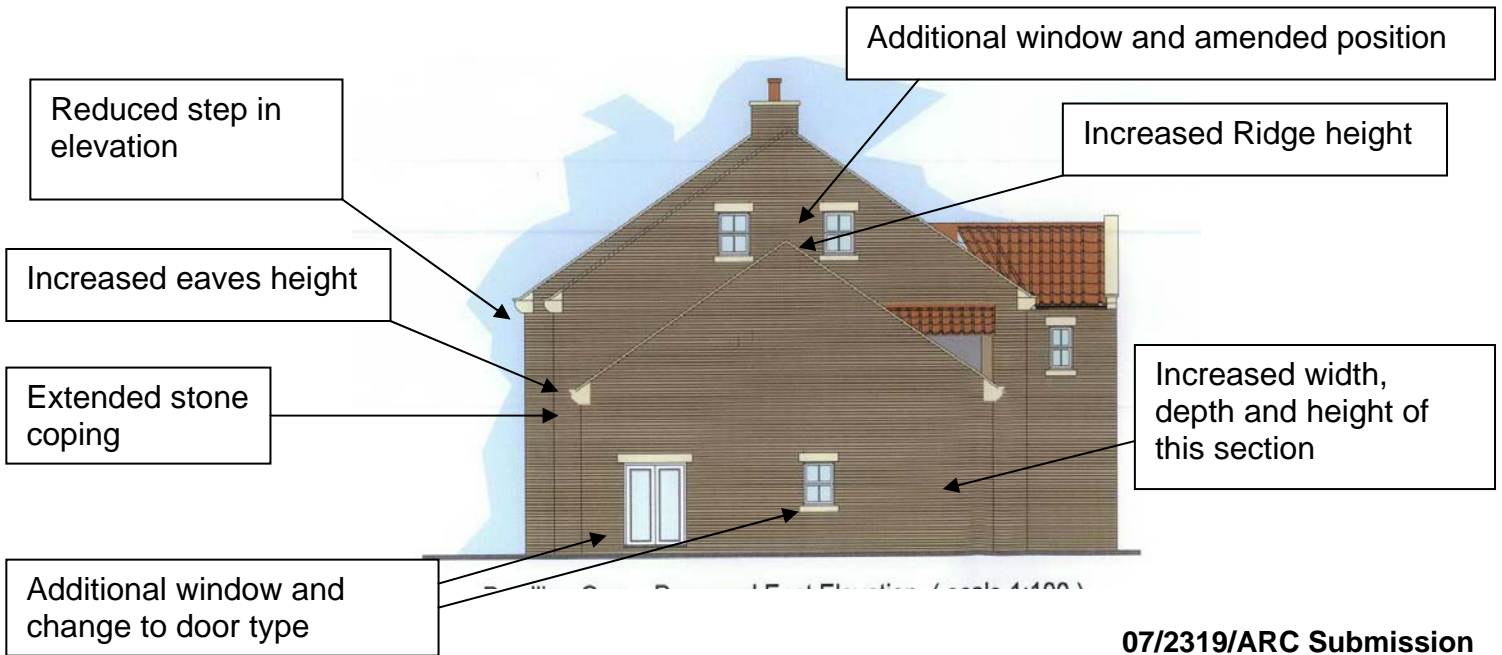


06/2771/VARY and 06/0461/REV (as approved)

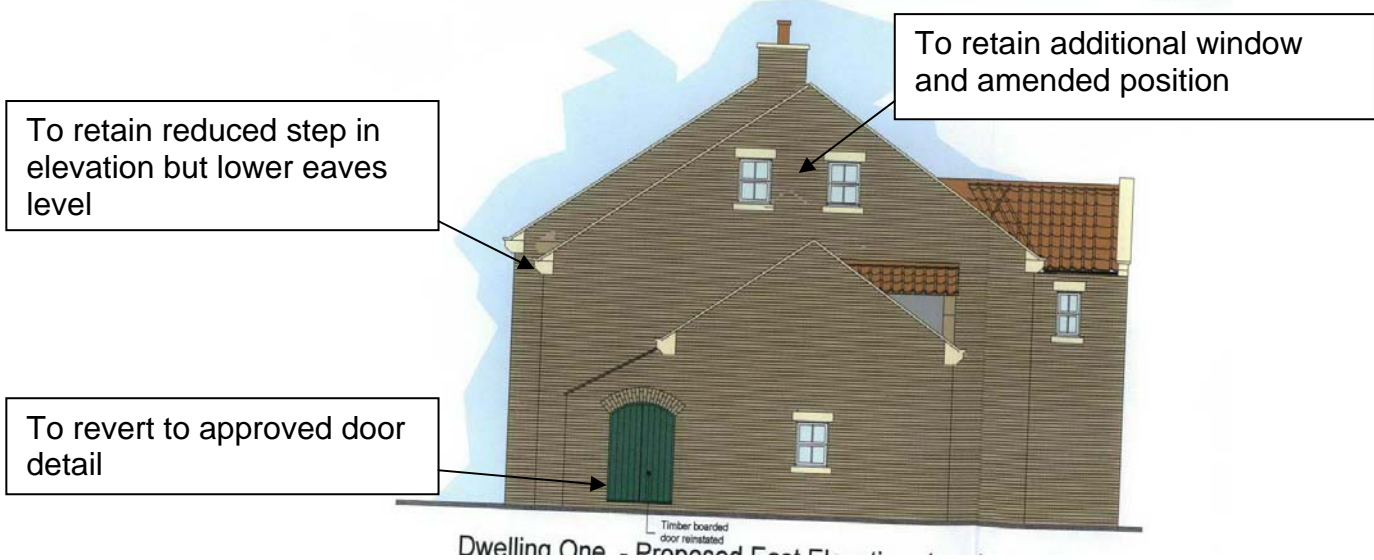


**Appendix reference 3. DWELLING ONE -(East or side elevation)
DIFFERENCES BETWEEN AS BUILT, AS PROPOSED AND AS APPROVED PLANS**

As Built



07/2319/ARC Submission



06/2771/VARY (as approved)

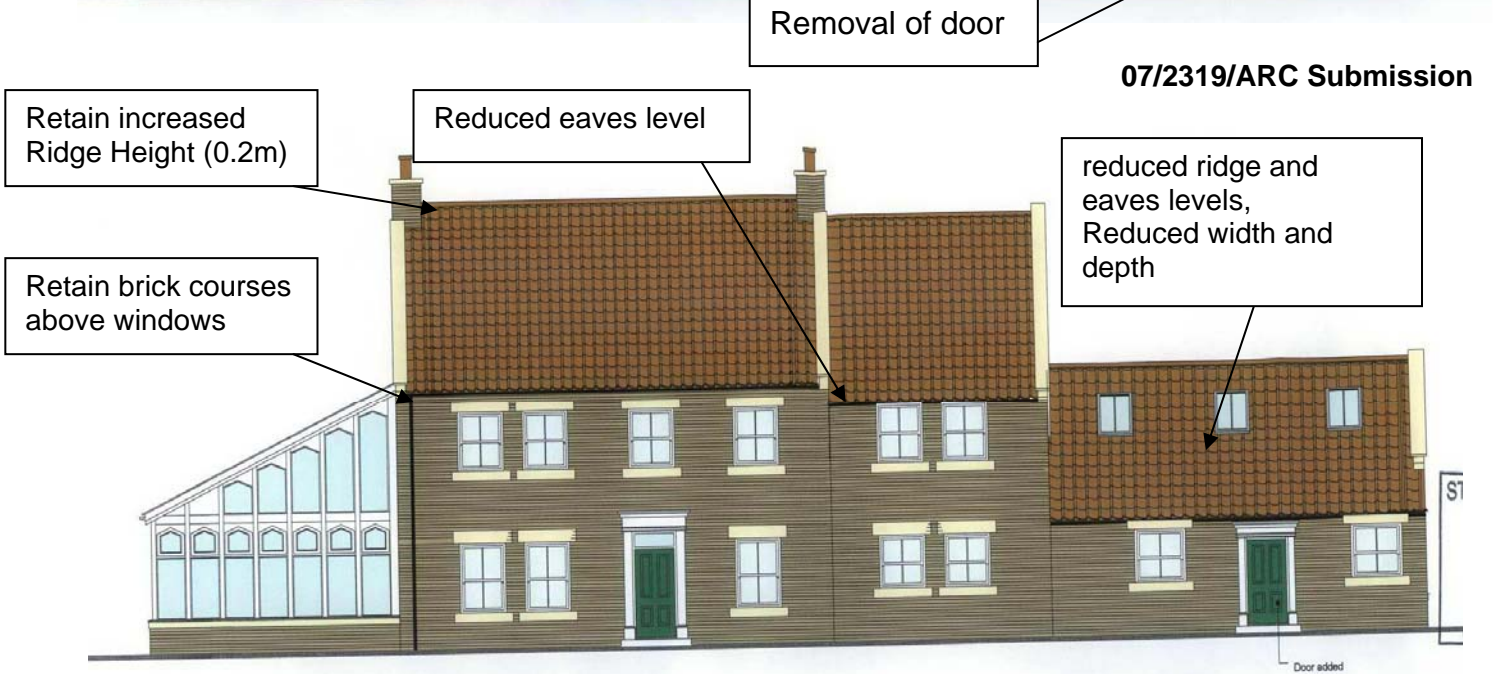
(note: although projecting gable to rear not shown on elevation it was included on floor plan details)



**Appendix reference 4. DWELLING ONE -(South or Front Elevation)
DIFFERENCES BETWEEN AS BUILT, AS PROPOSED AND AS APPROVED PLANS**



As built



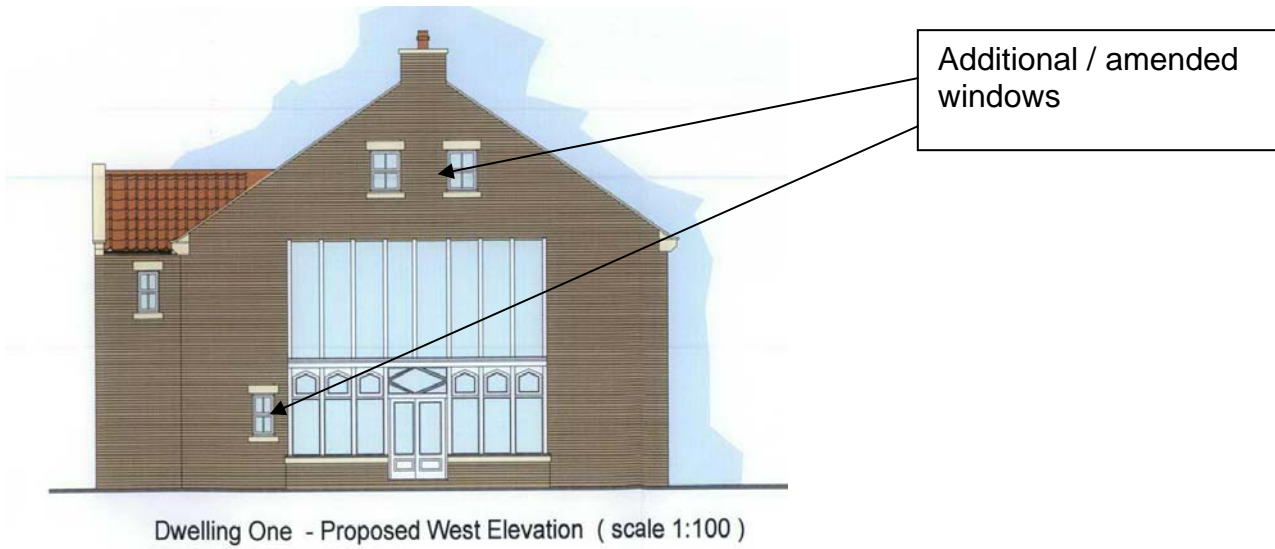
07/2319/ARC Submission



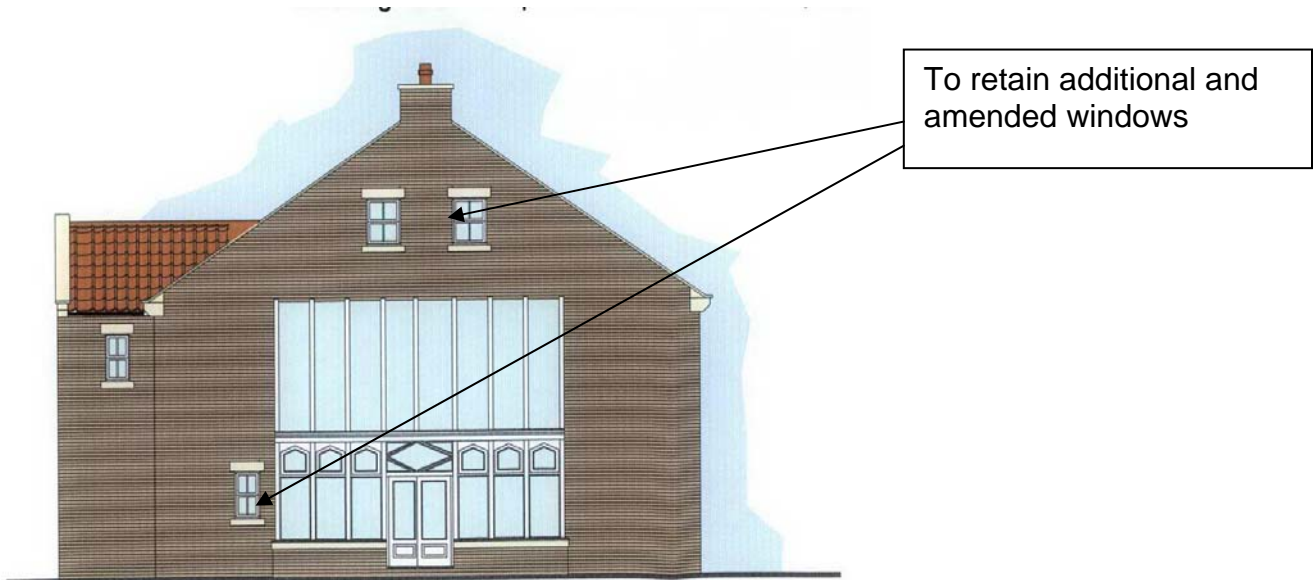
06/2771/VARY (as approved)

Appendix reference 5. DWELLING ONE -(West or Side Elevation)
DIFFERENCES BETWEEN AS BUILT, AS PROPOSED AND AS APPROVED PLANS

As Built



07/2319/ARC Submission



06/2771/VARY (as approved)

(note: although projecting gable to rear not shown on elevation it was included on floor plan details)



**Appendix reference 6. DWELLING TWO -(South or Front Elevation)
DIFFERENCES BETWEEN AS BUILT, AS PROPOSED AND AS APPROVED PLANS**

As Built



07/2319/ARC Submission



06/0461/REV (as approved)

(note: although projecting gable to rear not shown on elevation it was included on floor plan details)



**Appendix reference 7. DWELLING TWO -(North or Rear Elevation)
DIFFERENCES BETWEEN AS BUILT, AS PROPOSED AND AS APPROVED PLANS**

